

SCREW COVER ENCLOSURES

Application

Designed for use as electrical junction boxes, terminal wiring boxes, instrument housings, and electrical control enclosures. Provides protection from dust, dirt, oil and water. For installation information, consult our installation manual at www.saginawcontrol.com.

Construction

- 0.063" carbon steel.
- Seams continuously welded and ground smooth, no holes or knockouts.
- Captivated cover screws thread into sealed wells.
- Pour in place oil and water resistant gasket.
- Standoffs provided for mounting optional subpanels.

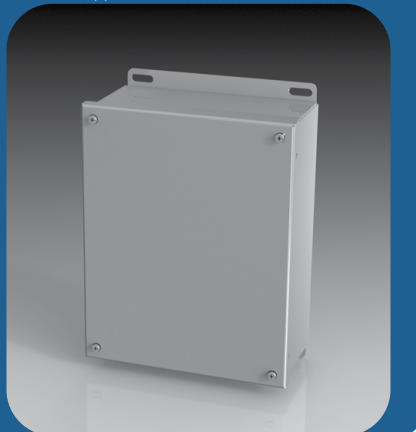
Finish

ANSI-61 gray powder coated inside and out.
Optional subpanels powder coated white.

IS4 Industry Standards

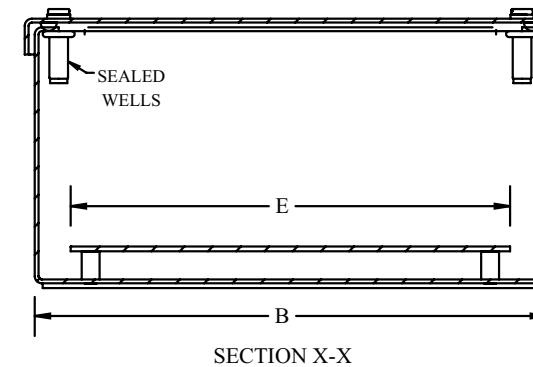
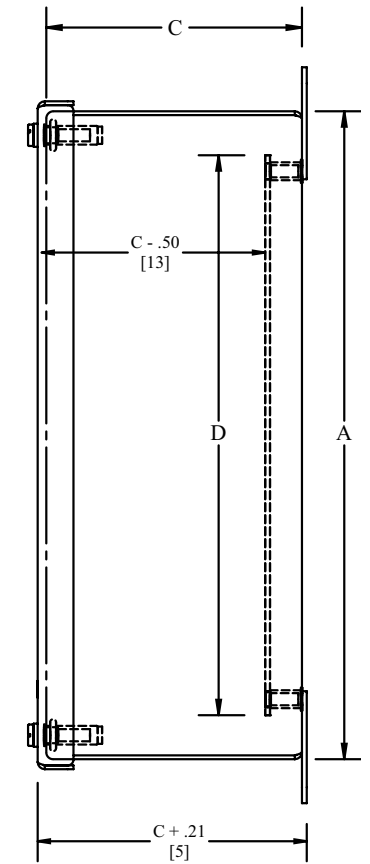
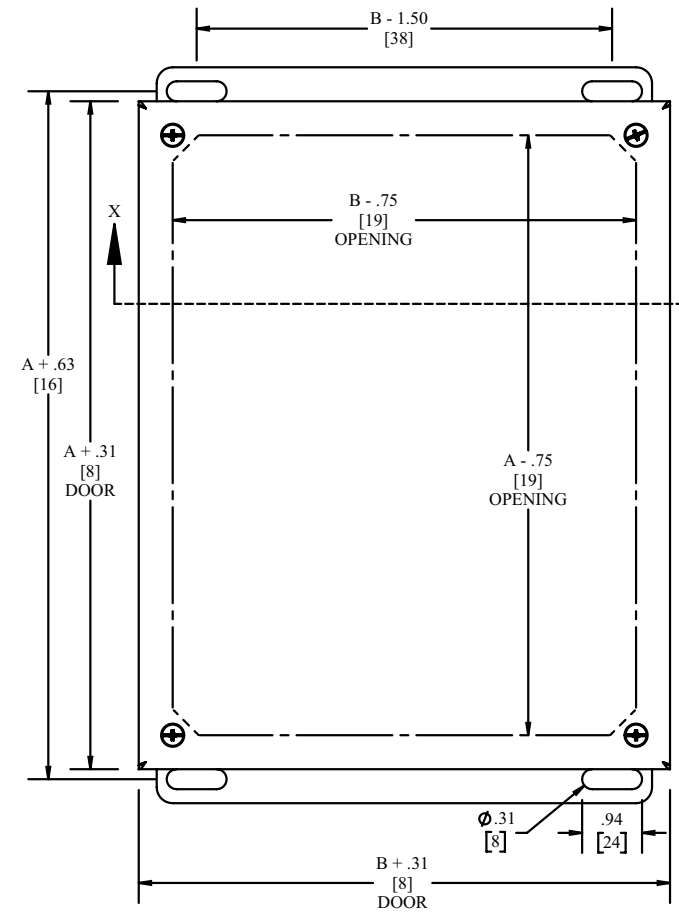
NEMA Type 3R, 4, 12 & Type 13
UL Listed Type 3R, 4 & 12
CSA Type 3R, 4 & 12
IEC 60529 IP66

***To maintain Type 3R listing, drainage is required. Install equally rated drainage device or drill a 1/8 to 1/4 inch hole in the bottom center of the enclosure, approximately 1 inch from the right, and 1 inch from the left for drainage, use listed rain-tight or wet location hubs. Drip shield over the door is recommended for all outdoor applications.



SCREW COVER ENCLOSURES TECHNICAL DATA

Catalog No.	Enclosure Product Code A1				Subpanel (P3)		
	Height (A)	Width (B)	Depth (C)	Industry Standard	Catalog No.	Panel Height (D)	Panel Width (E)
SCE-404SC	4.13	4.00	3.00	IS4	No Panel		
SCE-4044SC	4.13	4.00	4.00	IS4	No Panel		
SCE-604SC	6.13	4.00	3.00	IS4	SCE-6P4	5.00	3.00
SCE-6044SC	6.13	4.00	4.00	IS4	SCE-6P4	5.00	3.00
SCE-606SC	6.13	6.00	4.00	IS4	SCE-6P6	5.00	5.00
SCE-806SC	8.13	6.00	3.50	IS4	SCE-8P6	7.00	5.00
SCE-8066SC	8.13	6.00	6.00	IS4	SCE-8P6	7.00	5.00
SCE-808SC	8.13	8.00	4.00	IS4	SCE-8P8	7.00	7.00
SCE-1008SC	10.13	8.00	4.00	IS4	SCE-10P8	9.00	7.00
SCE-10086SC	10.13	8.00	6.00	IS4	SCE-10P8	9.00	7.00
SCE-1010SC	10.13	10.00	4.00	IS4	SCE-10P10	9.00	9.00
SCE-10106SC	10.13	10.00	6.00	IS4	SCE-10P10	9.00	9.00
SCE-1210SC	12.13	10.00	5.00	IS4	SCE-12P10	11.00	9.00
SCE-121010SC	12.13	10.00	10.00	IS4	SCE-12P10	11.00	9.00
SCE-1212SC	12.13	12.00	6.00	IS4	SCE-12P12	11.00	11.00
SCE-1412SC	14.13	12.00	6.00	IS4	SCE-14P12	13.00	11.00
SCE-1614SC	16.13	14.00	6.00	IS4	SCE-16P14	15.00	13.00



NOTE:
SUB-PANEL SOLD SEPARATELY